

2005-2006 Scholarship Recipients

By Cathie Morgan (Valparaiso University), Director of Foundation Services

The Foundation Chapter Board of Directors is very pleased to announce the recipients of the Dale A. Slivinske and Sherwood Blue scholarships for the 2005-2006 academic year. Despite the fact that contributions to the annual campaign were low this past year, the Board was able to provide a total of \$36,500 to these worthy applicants.

Applications for the 2006-2007 awards are available online beginning in January, 2006 at www.thetachi.org. Paper copies are mailed to each chapter around the same time.

When you receive your annual campaign contribution form this year, please consider increasing your gift so that the fund behind these awards continues to grow and provide this valuable assistance to Theta Chi students at schools across the country.

Slivinske Scholarship Award Winners for 2005/2006

Richard Allred (Eta Delta/Babson College)
 Tyler Barnes (Iota Beta/Southwest Missouri State University)
 Brian Bielicki (Gamma Chi/Randolph-Macon College)
 Benjamin Buresh (Phi/North Dakota State University)
 Sean Cain (Iota Beta/Southwest Missouri State University)
 Nicholas Cunningham (Delta Kappa/Ball State University)
 Paulo Garcia (Gamma Chi/Randolph-Macon College)
 Kelly Gibson (Gamma Lambda/University of Denver)
 Jeffrey Keller (Beta Upsilon/California State University - Fresno)
 Mark Hassenstab (Phi/North Dakota State University)
 Christopher Janish (Delta Psi/University of Kansas)
 Thomas Larm (Iota Beta/Southwest Missouri State University)
 Jeffrey Melick (Gamma Phi/Nebraska Wesleyan University)
 Andrew Nelson (Alpha Mu/Iowa State University)
 Shawn Nieuwsma (Phi/North Dakota State University)

Thomas Perez-Lopez (Xi/University of Virginia)
 C. Andre Pitre (Eta Rho/Centenary College)
 Matthew Turner (Iota Beta/Southwest Missouri State University)
 Cory Wielert (Iota Beta/Southwest Missouri State University)

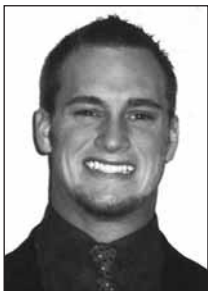
Blue Scholarship Award Winners for 2005/2006

John T. Brantley (Theta Omega/Sam Houston State University)
 Erik A. Bowman (Gamma Phi/Nebraska Wesleyan University)
 Andrew M. Coughlin (Gamma Phi/Nebraska Wesleyan University)
 Brandon J. Cutler (Alpha Mu/Iowa State University)
 Robert R. Detwiler (Beta Nu/Case Western Reserve University)
 Aaron S. Elder (Epsilon Kappa/University of Idaho)
 Brian J. Elizardi (Gamma Lambda/University of Denver)
 Paulo A. Garcia (Gamma Chi/Randolph-Macon College)
 James R. Glenn (Beta Rho/Illinois Wesleyan University)
 David J. Kaiser (Gamma Phi/Nebraska Wesleyan University)
 Jeffrey Keller (Beta Upsilon/California State University-Fresno)
 Stephen A. Marshall (Beta Upsilon/California State University-Fresno)
 Jeffrey Melick (Gamma Phi/Nebraska Wesleyan University)
 Cory D. Olson (Beta Kappa/Hamline University)
 Danyal A. Sattar (Tau/University of Florida)
 Christian J. Tobe (Zeta Beta/Adrian College)
 James W. Woodlee (Gamma Omicron/Wake Forest University)

Similarly, twenty three alumni corporations have established Chapter Specific Scholarship Funds with the Foundation Chapter. The Foundation Chapter's Board of Directors is pleased to publish photographs (if provided) in *The Rattle* of any scholarship recipients who benefit from a CSSE, and offer congratulations to both the alumni corporation (for setting up the



*Richard Allred
 Eta Delta/Babson
 College*



*Tyler Barnes
 (Iota Beta/Southwest
 Missouri State Univ.)*



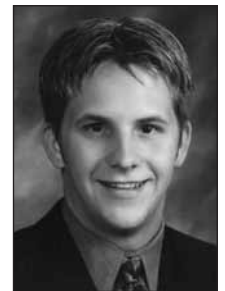
*Brian Bielicki
 (Gamma Chi/Randolph-
 Macon College)*



*Benjamin Buresh
 (Phi/North Dakota
 State University)*



*Sean Cain
 (Iota Beta/SW Missouri
 State University)*



*Nicholas Cunningham
 (Delta Kappa/Ball State
 University)*



*Paulo Garcia
 (Gamma Chi/Randolph-
 Macon College)*



*Kelly Gibson
 (Gamma Lambda/
 University of Denver)*



*Jeffrey Keller
 (Beta Upsilon/California
 State University-Fresno)*



*Mark Hassenstab
 (Phi/North Dakota
 State University)*



*Christopher Janish
 (Delta Psi/University
 of Kansas)*



*Thomas Larm
 (Iota Beta/Southwest
 Missouri State Univ.)*

Scholarship Fund) and to the recipients of the scholarships themselves.

Chapter Specific Scholarship Fund Recipients

Adrian L. Morrison (Zeta Pi/Old Dominion University)

Taylor A. Burgess (Zeta Pi/Old Dominion University) ■

*Not pictured: Robert R. Detwiler
(Beta Nu/Case Western Reserve University)*



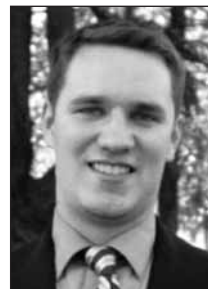
*Jeffrey Melick
(Gamma Phi/Nebraska Wesleyan University)*



*Andrew Nelson
(Alpha Mu/Iowa State University)*



*Shawn Nieuwsma
(Phi/North Dakota State University)*



*Thomas Perez-Lopez
(Xi/University of Virginia)*



*Andre Pitre
(Eta Rho/Centenary College)*



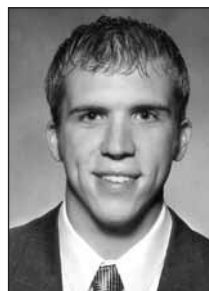
*Matthew Turner
(Iota Beta/Southwest Missouri State Univ.)*



*Cory Wielert
(Iota Beta/Southwest Missouri State Univ.)*



*John T. Brantley
(Theta Omega/Sam Houston State Univ.)*



*Erik A. Bowman
(Gamma Phi/Nebraska Wesleyan University)*



*Andrew M. Coughlin
(Gamma Phi/Nebraska Wesleyan Univ.)*



*Brandon J. Cutler
(Alpha Mu/Iowa State University)*



*Aaron S. Elder
(Epsilon Kappa/University of Idaho)*



*Brian J. Elizardi
(Gamma Lambda/University of Denver)*



*James R. Glenn
(Beta Rho/Illinois Wesleyan University)*



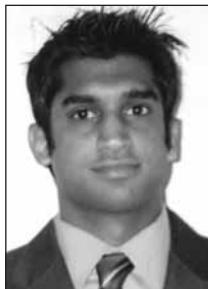
*David J. Kaiser
(Gamma Phi/Nebraska Wesleyan University)*



*Stephen A. Marshall
(Beta Upsilon/California State Univ.-Fresno)*



*Cory D. Olson
(Beta Kappa/Hamline University)*



*Danyal A. Sattar
(Tau/University of Florida)*



*Christian J. Tobe
(Zeta Beta/Adrian College)*



*James W. Woodlee
(Gamma Omicron/Wake Forest University)*



*Adrian L. Morrison
(Zeta Pi/Old Dominion University)*



*Taylor A. Burgess
(Zeta Pi/Old Dominion University)*